

# TalkingWater

Tuesday, 12 April 2022

Have questions? Call our friendly Customer Operations team on 1300 138 265 or email [customersupport@murrayirrigation.com.au](mailto:customersupport@murrayirrigation.com.au)



Murray Irrigation

## Operations over Easter

Operations will continue as usual over the Easter break with rostered staff continuing to provide water delivery and maintenance services.

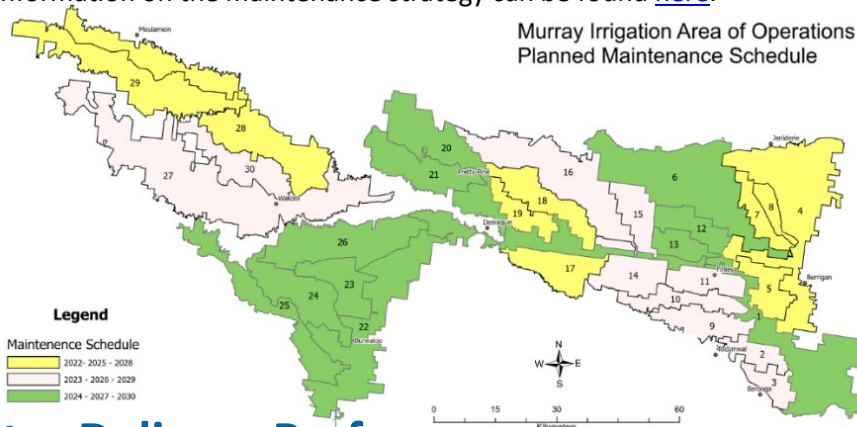
Phone support on 1300 138 265 is available 6.30am to 6.30pm, 7 days a week. In some instances, you may reach the voice mail service due to the current resourcing challenges reported in last week's Talking Water. Please leave a message, a staff member will get back to you during business hours.

Emergencies, such as major infrastructure failures, significant flooding, or safety risk, can be reported 24/7 by calling Murray Irrigation's emergency line, 1300 657 313.

## 2022 Winter Maintenance Schedule

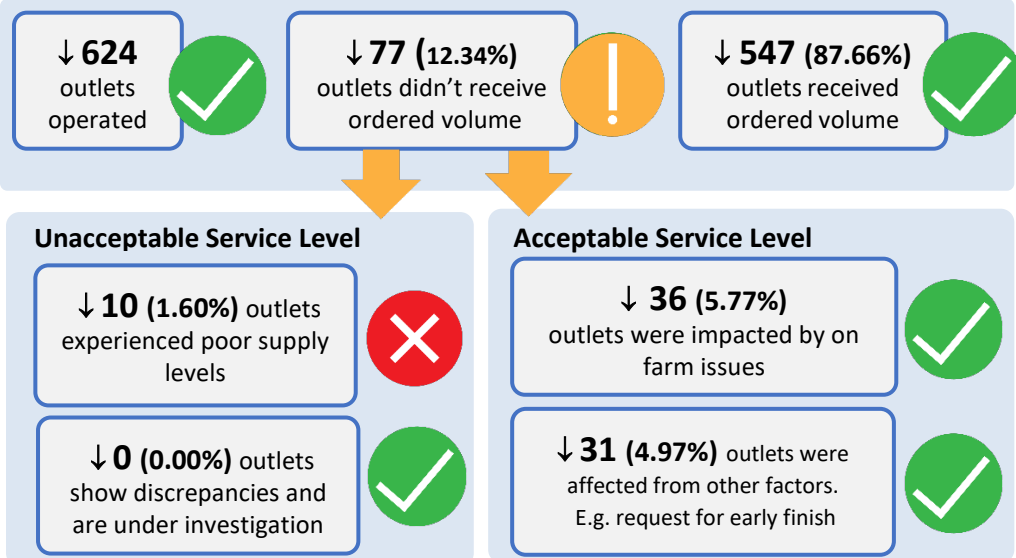
Aligned with the three year Planned Maintenance Schedule the areas in yellow below will be drained for winter maintenance in 2022. Customers can also view the maintenance zones and scheduled maintenance year for their outlets via the "My Outlets" tab on their [Customer Portal](#).

More information on the maintenance strategy can be found [here](#).



## Water Delivery Performance

For the period 05/04/22 – 12/04/22



## 2022 Trade closure dates

**5.00pm Wednesday 22 June** – closure Water Exchange

**5.00pm Friday 24 June** – closure external transfers to/from Murray Irrigation

**5.00pm Monday 27 June** – closure internal transfers and access to the customer portal

**9.00am Friday 1 July** – re-opening Water Exchange and customer portal

Reminder carryover is capped at 50 percent of Class C water entitlements held, any volume exceeding this will be forfeited at the end of the season.

## Vacancies

Staff needed - If you or anyone you know are interested in joining our team or discussing available roles, please email [recruitment@murrayirrigation.com.au](mailto:recruitment@murrayirrigation.com.au)

## Announced allocation

Class C General Security.....	110%
Allocation Advance.....	8%
Water resource distribution .....	6%

## Water availability and deliveries\* (12/04/2022)

Supplementary Licence.....	121,704 units
Supplementary Diversions.....	121,704 ML
Supplementary Deliveries.....	94,726 ML
YTD deliveries.....	782,414 ML
Customers.....	679,682 ML
DPIE Deliveries .....	84,023 ML
WaterNSW Deliveries.....	18,709 ML
Weekly Deliveries.....	21,937 ML
Weekly crop usage..... (Annual Pasture) 44%	
Customer account balance.....	442,701 ML
WE in customer accounts.....	810,153 WE
Vol. % remaining.....	54.6%

\*Provisional data

## Channel flows today\*

Wakool Offtake.....	775 ML
Mulwala Offtake.....	2,450 ML
Billabong Escape.....	5 ML
Edward River Escape.....	899 ML
Perricoota Escape.....	0 ML
Wakool River Escape .....	0 ML

\*Includes DPIE Deliveries

## Water trade data

Net trade week.....	-1,454 ML
Net trade YTD.....	37,527 ML

## Water exchange data

(11/04/2022)

Internal listings (No. & ML).....	15; 2,848 ML
External listings (No. & ML).....	0; 0 ML
Int. purchasers (No. & ML).....	22; 2,104 ML
Ext purchasers (No. & ML).....	7; 1,466 ML

Water for sale @ 11/04/22.....	14,819 ML
Weighted average sale price.....	\$11.00
Price range @ 12/04/22.....	\$7.90 - \$200
Buy offer range @ 12/04/22.....	\$6.00 - \$2

## Storages\*

mdba.gov.au

Dartmouth .....	3,594 GL	↓	93 %
Hume .....	2,599 GL	↓	86 %
Lake Victoria.....	421 GL	↓	62 %
Menindee Lakes.....	1,805 GL	↑	100 %
Total Storage.....	8,419 GL	↓	91 %

## Rivers\*

Murray @ Doctors Point .....	7,837 ML/d
Murray d/s Yarra. Weir .....	7,548 ML/d
Goulburn @ McCoy Bridge.....	1,088 ML/d
M'Bidgee d/s Balranald.....	4,217 ML/d
Darling @ Burtundy.....	6,225 ML/d
Flow to SA.....	22,208 ML/d
Murray to the sea .....	36 gates open

\*This information is provided for general reference purposes only. We take best endeavours to ensure accuracy. This data was correct as at 1pm, Tuesday, 12 April 2022

## Resource links

[MDBA weekly report](#)

[NSW Water allocation statements](#)

[Rainfall and evaporation](#)

[Barmah Choke trade balance](#)