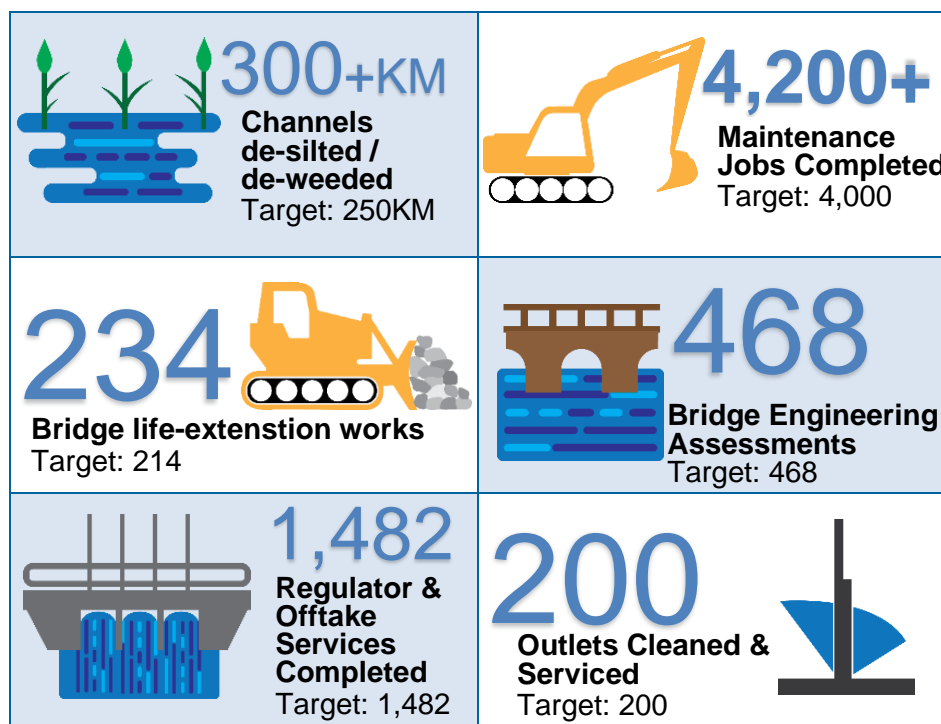




Murray Irrigation Winter Operations Update 2021

This issue of Talking Water provides a summary of the works completed under the Maintenance Strategy Program during the 2021 winter period.



Murray Irrigation's Maintenance program combined with the Winter Operating Mode balances additional watering opportunities for customers, whilst maximising efficiencies in our works program. The works program is now closing with all works completed safely, on time and on budget despite the wet winter and COVID restrictions.

Winter Operations

The three-year rolling maintenance strategy has enabled 8,600 megalitres to be delivered to customers in non-maintenance zones during the Winter Operations period. We will now transition into the 2021/22 irrigation season.

Maintenance update with Nick Warne

Do you want to learn more about our Maintenance Strategy? Murray Irrigation's Nick Warne explains our maintenance strategy, weed maintenance and winter works. Listen [here](#).

Supplementary Event

With the acceleration of Winter Works many customers have been able to access the current Supplementary Water event. The last two maintenance areas are currently filling, and customers will be notified via SMS when water is available.

The supplementary event has been extended until 13 August 2021. Any further extensions will be communicated to all customers.

[Click for last week's Talking Water](#)

Announced allocation

Class C General Security.....	26%
Allocation Advance.....	8%
Water resource distribution	0%

(issued against Delivery Entitlements)

Water availability and deliveries

(10/08/2021)

Supplementary Licence.....	121,704 units
Supplementary Diversions*.....	45,755 ML
Supplementary Deliveries*.....	17,714 ML
YTD deliveries*.....	17,718 ML
Customers	17,718 ML
DPIE Deliveries.....	0 ML
WaterNSW Deliveries.....	0 ML
Weekly Deliveries	15,298 ML
Weekly crop usage.....	61% Storage
Customer account balance.....	564, 807 ML
WE in customer accounts.....	805,724 WE
Vol. % remaining.....	70%

*Provisional data

Channel flows today

Wakool Offtake.....	1,000 ML
Mulwala Offtake.....	1,300 ML
Billabong Escape.....	0 ML
Edward River Escape.....	0 ML
Perricoota Escape.....	0 ML
Wakool River Escape.....	0 ML

Water trade data

Net trade week.....	-1,534 ML
Net trade YTD.....	-4,840 ML

Water exchange data

(09/08/2021)

Internal listings (No. & ML).....	17;2,843.91 ML
External listings (No. & ML).....	1;113 ML
Int. purchasers (No. & ML).....	27;2,482.91 ML
Ext purchasers (No. & ML).....	1;36 ML

Water for sale @ 09/08/21.....	4,391 ML
Weighted average sale price.....	\$70.00
Price range @ 10/08/21.....	\$76-\$250
Buy offer range @ 10/08/21.....	\$70-\$50

Storages*

mdba.gov.au

Dartmouth	2,755 GL	↑	71 %	↑
Hume	2,677 GL	↑	89 %	↑
Lake Victoria	597 GL	↑	88 %	↑
Menindee Lakes.....	1,239 GL	↑	72 %	↑
Total Storage.....	7,268 GL	↑	78 %	↑

Rivers*

Murray @ Doctors Point	7,571 ML/d
Murray d/s Yarra. Weir	18,521 ML/d
Goulburn @ McCoy Bridge.....	5,751 ML/d
M'Bidgee d/s Balranald.....	7,083 ML/d
Darling @ Burtundy.....	441 ML/d
Flow to SA.....	16,899 ML/d
Murray to the sea	45 gates open

*This information is provided for general reference purposes only. We take best endeavours to ensure accuracy. This data was correct as at 9am, Tuesday, 10 August 2021.

Resource links

- [MDBA weekly report](#)
- [NSW Water allocation statements](#)
- [Rainfall and evaporation](#)
- [Barmah Choke trade balance](#)