

## Critical water planning for the Murray Valley

Issue 28 | 15 October 2009

### Current water availability

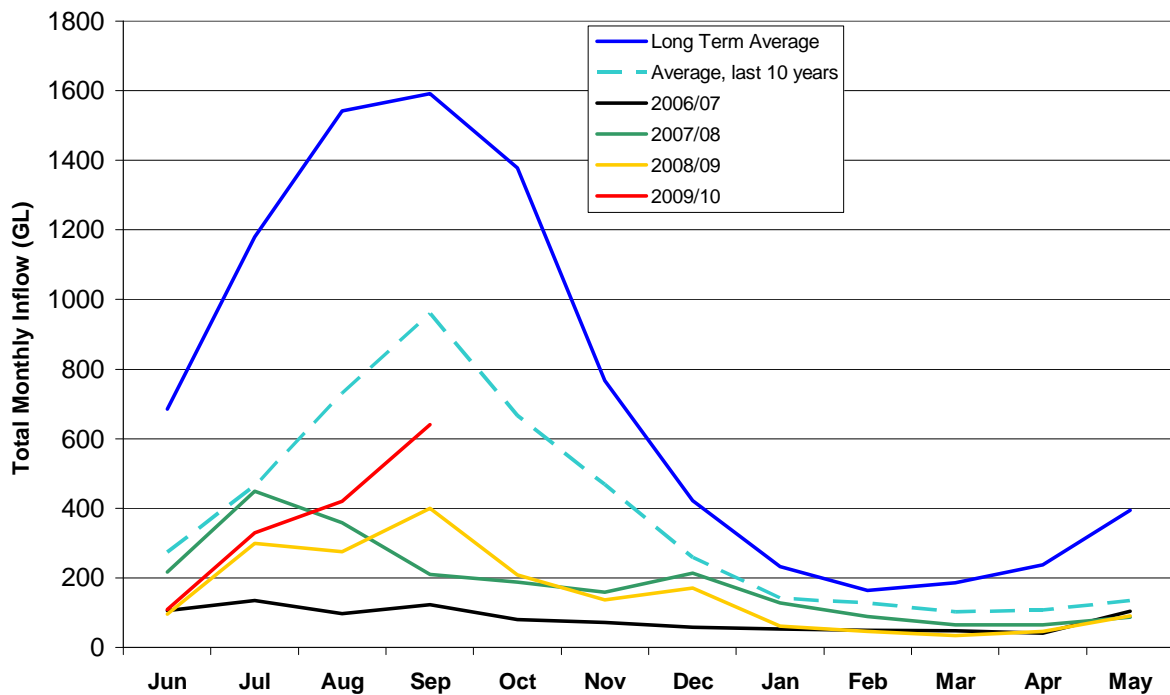
Rainfall over the past month has fallen mostly in the upper parts of the catchment with significant falls in the alpine regions. Rainfall across the catchment has been average to above average for the month.

From 11 September to 12 October, Thredbo Village received 294.7 millimetres (mm); which is 160 per cent of the October average, Albury received 65.8 mm; 100 per cent of the October average, Deniliquin received 31.0 mm; 80 per cent of the October average, and Mildura received 33.8 mm; 110 per cent of the October average.

The following table shows Murray Valley storage levels as at 11 October 2009.

Storage @ 12 October 2009	Volume (GL)	Percent of capacity	Change (GL) in Volume since 11 September	Volume at this time last year
Hume Dam	1100	36	+285	1063
Dartmouth Dam	1103	28	+115	858
Menindee Lakes	209	12	-23	419
Lake Victoria	309	46	+31	266
Total volume	2721		+408	2606

## Inflow graph



Inflow graph courtesy of Murray-Darling Basin Authority

## What this means

The good rain in the Snowy Mountains and the Hume and Kiewa catchments has resulted in resources continuing to improve. While the total inflows are still well below average for this time of year they are still significantly better than the last three years.

This has allowed an allocation increase for general security licences of 4 per cent to 5 per cent of entitlement. To deliver this additional allocation, an additional 15gigalitres (GL) has been allocated to Murray Irrigation Limited's conveyance. In keeping with the allocation to this conveyance licence, allocations totalling 8 gigalitres (GL) have been made to the associated environmental licence.

## Mid Murray tributaries

Following detailed work with the landholder advisory group, flows commenced into the systems in early September. Delivery into all reaches is progressing well with all reaches expected to be flowing within a month. When the flows extend the full length of each stream, the rates will be reduced to the minimum to maintain continuous flows. Operations of this system will be reviewed regularly in consultation with the local community.

## **Trade**

The temporary embargo on trades from the Murrumbidgee Valley to the Murray River continues.

All other trades are permitted under the same rules that applied in 2008/09 including trades from above to below the Barmah Choke.

## **Lower Darling River management**

Flows into the Darling River have virtually ceased in the past month with releases from the Menindee Lakes reduced to the minimum to maintain supplies to all licences. Widespread heavy rainfall is needed to produce sufficient runoff to re-establish significant inflows.

There is no change to allocations in this system.

## **Compliance**

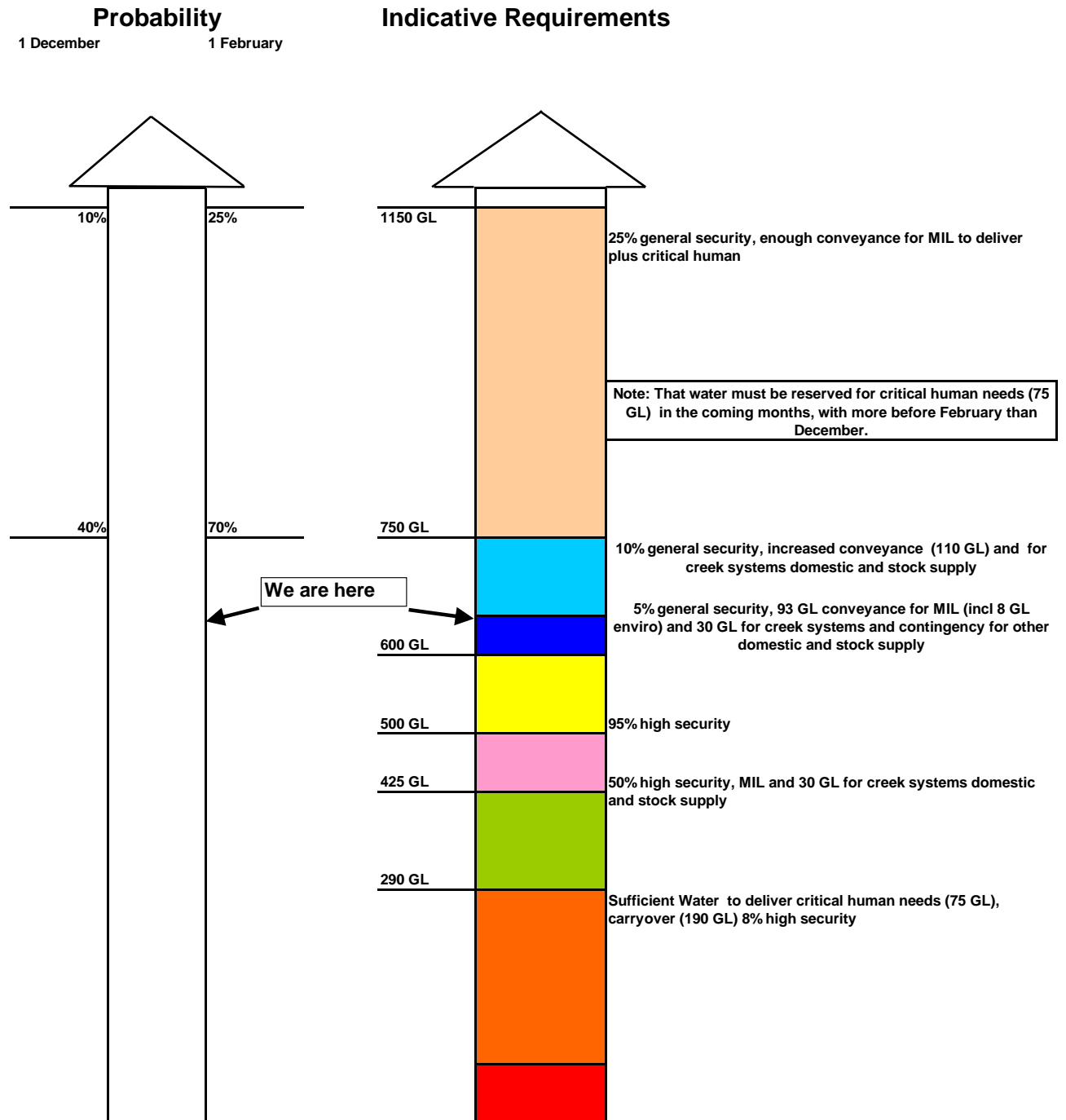
The NSW Office of Water's Drought Contingency Planning Program will only work if everyone adheres to the restrictions and is careful with **all** water use. To ensure that the system is run fairly, the community should report any suspected breaches to the Office's Compliance Unit on 1800 633 362 or by email to [watercompliance@dwe.nsw.gov.au](mailto:watercompliance@dwe.nsw.gov.au). All reports are confidential.

## **Water availability outlook**

The figures that have been used to inform this diagram are based on dry tercile (driest 1/3 of years) and are very conservative.

The volumes on the “rocket” are indicative only and may change depending on the priority of access following stakeholder feedback and the reservation of water for 2010/11.

□ **NSW Murray Valley Outlook**  
 As at 15 October 2009



Contact: Bunty Driver 03 5898 3910 mobile 0407 403 234